



NAVFAC Construction: Expectations & What's New?

Mr. Gregg R. Shipp, P.E.
Senior Construction Manager
NAVFAC Atlantic

Common Goals



SAFETY!



Common Goals



Activity Description	Early Start	Early Finish	2003												2004												2005												2006											
			2003			2004			2005			2006			2003			2004			2005			2006			2003			2004			2005			2006														
			+ SITE PREPARATION																																															
			MAIN EXHIBITION BUILDING																																															
a 3	03MARD4	20JUL04	Drill Calcanes @ Area 3																																															
a 2	16APRD4	15JUN04	Drill Calcanes @ Area 2																																															
Roofs @ Area 3	05MAYD4	07ECCD4	FRPP Shallo: Foundation @ Area 3																																															
Ins. Kle. Bldg	05MAYD4	02FEB05	Underground Utilities Inside Building																																															
Roofs @ Area 2	16JUN04	12AUG04	FRPP Shallo: Foundation @ Area 2																																															
a 1	16JUN04	14OCTD4	Drill Calcanes @ Area 1																																															
Roofs @ Area 1	17AUGD4	15JAN05	FRPP Shallo: Foundation @ Area 1																																															
Steel @ Area 3	01SEPD4	29APRD5	Erect Cell Structural Steel @ Area 3																																															
Steel @ Areas 2, 1, & 4	01SEPD4	01NOVD5	Erect Cell Structural Steel @ Areas 2, 1, & 4																																															
a 4	19OCTD4	16MARD5	Drill Calcanes @ Area 4																																															
Deck	05DECD4	05MARD5	Prep & Pour Slab on Deck																																															
Roofs @ Area 4	16DECD4	15JUL05	FRPP Shallo: Foundation @ Area 4																																															
	04FEB05	05MAYD5	Elev. on Floor Slabs																																															
ems	05MARD5	05FEB07	Install Mechanical Systems																																															
ms	05MARD5	05FEB07	Install Electrical Systems																																															
ms	05MARD5	05FEB07	Install Plumbing Systems																																															
Systems	05MARD5	05FEB07	Install Fire Protection Systems																																															
	05APRD5	01DECD5	Install Exterior Blin																																															
Grade	03MAYD5	28OCTD5	Prep & Pour Slab on Grade																																															
	05MAYD5	31OCTD5	Install Roofing																																															
Slab	05JUN05	05APRD5	Prep & Pour Topping Slab																																															
ceilings	05JUN05	05JUN07	Install Elevators & Escalators																																															
	05JUN05	31OCTD7	Interior Finishes																																															
Central Electrical Rooms	27OCTD5	28SEPD5	Central Plant/Mechanical/Electrical Rooms																																															
	01FEB07	31MARD5	Punch List																																															
Work	01MARD7	30NOVD7	Landscaping & Streetwork																																															
			+ EXISTING GARAGE & CONFERENCE CENTER																																															
			+ PLATT FAÇADE RELOCATION																																															
	13OCTD3	19OCTD4																																																
			+ ELEVATED SERVICE ROADWAY & LOADING DOCK PLAZA																																															
	07MAYD4	09OCTD5																																																
			+ EXTERIOR UTILITIES																																															
	28JAN04	15JUN05																																																
			+ PYLONS																																															
	18JUL05	14MARD6																																																
			+ BUILDING CONTROLS CONNECTIONS																																															
	01SEPD5	05JUN05																																																

COST & SCHEDULE

Common Goals



QIJAI ITYI

Expectations



GETTING STARTED

Expectations



SUBMITTALS

Expectations



DURING
CONSTRUCTION

Expectations



RED
ZONE

Expectations

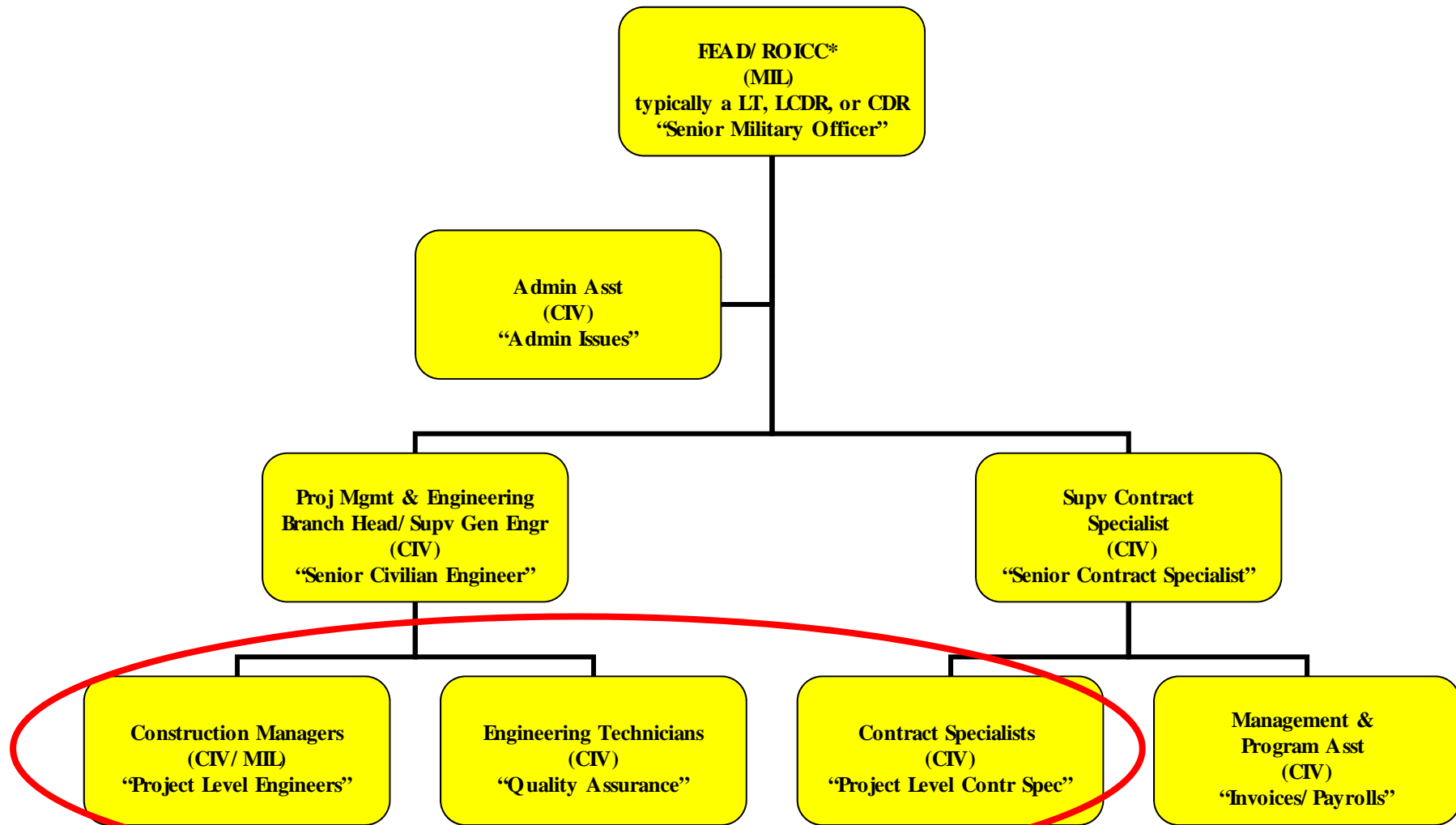


FINAL DETAILS

What's New?



Field Office Organizational Structure (Construction portion)



* FEAD on navy bases, ROICC on MC & AF

FEC CI5 POCs



- **NAVFAC ATLANTIC Construction Product Line Manager (CI5)**
 - Angel Ho, P.E. (angel.ho@navy.mil) 757-322-8413
- **NAVFAC MIDLANT Construction Product Line Coordinator (CI5)**
 - Joe Formato, P.E. (joseph.formato@navy.mil) 757-445-6127
- **NAVFAC WASH Construction PLC (CI5)**
 - John Nesius, P.E. (john.nesius@navy.mil) 202-685-3129
- **NAVFAC SE Construction PLC (CI5)**
 - Jack McCarthy, P.E. (jack.mccarthy@navy.mil) 904-542-6659
- **NAVFAC MW Construction PLC (CI5)**
 - Mark Conti, P.E. (mark.conti@navy.mil) 847-688-2600 ext. 411
- **NAVFAC SW Construction PLC (CI5)**
 - Tom Clark, P.E. (tom.clark@navy.mil) 619-532-1410
- **NAVFAC NW Construction PLC (CI5)**
 - Scott Hinton, P.E. (scott.hinton@navy.mil) 360-315-4450
- **NAVFAC EURAFSWA Construction PLC (CI5)**
 - James Hamrick, P.E. (james.hamrick@eu.navy.mil) 011-39-081-568-5610

Questions?



gregg.shipp@navy.mil 757-322-8349

Questions?



Backup Slides

Topics



- **Common Goals**
- **Expectations**
- **What's New?**
- **NAVFAC Field Office(s) Organizational Structure**
- **Facilities Engineering Command Construction Points of Contact**
- **Q&A**

Common Goals



- **SAFETY!**
- **COST**
- **SCHEDULE**
- **QUALITY**
- **Quality trumps cost and schedule**
- **Nothing trumps safety!**

Expectations



- **After award (getting off to a good start).....**



- **Be proactive in scheduling initial meetings** (*Post Award Kickoff, Design Presentation/Concept Design Workshop, Partnering, Preconstruction Conference, etc.*)
- **Begin NAVFAC Red Zone adherence at first meeting**
- **Timely provision and thorough review of administrative submittals** (Bonds/Insurance, QC Plan, Health and Safety/Accident Prevention Plan, Environmental Protection Plan, Construction Schedule/Schedule of Prices, LEED Implementation Plan, Stormwater Pollution Prevention Plan/NOI, etc.)
- **Establish and keep key Prime Contractor team members intact during construction** (PM, Supt, QC Manager, Safety Manager, etc.)
- **Choose subcontractors wisely** (need to balance safety record, past performance, reliability, staffing capabilities, etc. with cost)

Expectations (con't)



- **During Construction (from a personnel perspective).....**



- Provide contractor personnel badges/vehicle pass requests in a timely manner (note: Pass Office does not work for NAVFAC)
- Ensure all field employees ARE either U.S. citizens or legal aliens (if allowed) ~ Prime Contractor and Subcontractors' responsibility
- Ensure new employees or subcontractors who come in after a feature of work has already begun also know the contract requirements and have received the appropriate safety training
- QC Manager (or Alt QC Mgr) must be on site whenever work is being performed. If utilized, the Alt QC Mgr should be fully aware of all ongoing work/QC reqmts while providing coverage

Expectations(con't)



- **During Construction (from a project perspective).....**
 - **Maintain a proactive safety posture – don't wait for the CM/ET to say something**
 - **Ensure three phases of QC occur and are documented (preparatory meetings are KEY in identifying safety hazards, verifying submittal approvals, potential conflicts/presence of UG utilities, const sequence, etc.) Invite the CM/ET.**
 - **Critical installation/performance verification requirements**
 - HVAC TABS/DDC
 - Emergency Generators/Pad Mounted Transformers/Hi-Voltage
 - Fire protection
 - Elevators
 - Roofs
 - Underwater structures

Expectations(con't)



- **During Construction (from a project perspective).....**
 - **Be environmentally focused**
 - Maintain erosion/sediment control & stormwater pollution prevention measures
 - **For modifications – provide well prepared, detailed proposals in a timely manner. Establish overhead rate early or choose FAR defaults.**
 - **If possible, provide for consideration by the project team, alternative solutions to field problems that mitigate cost and schedule impact**

Expectations(con't)



- **During Construction (as we near completion).....**

- **Use the NAVFAC Red Zone Process**

- Focuses on planning and execution of actions required to render facilities complete and usable for the client in a timely manner
 - Required by UFGS 01 30 00 Administrative Requirements par. 1.11 (DBB) or UFGS 01 31 19.05 20 Post Award Meetings par. 1.7 (DB)
 - Starts at the pre-construction conference or PAK with provision of the checklists
 - Requires a Facility Turnover Planning Meeting at 75% WIP or 3-6 months from BOD – whichever comes first

- **Basically – RZ is a checklist to help the project team complete all the details required for project completion**

Expectations(con't)



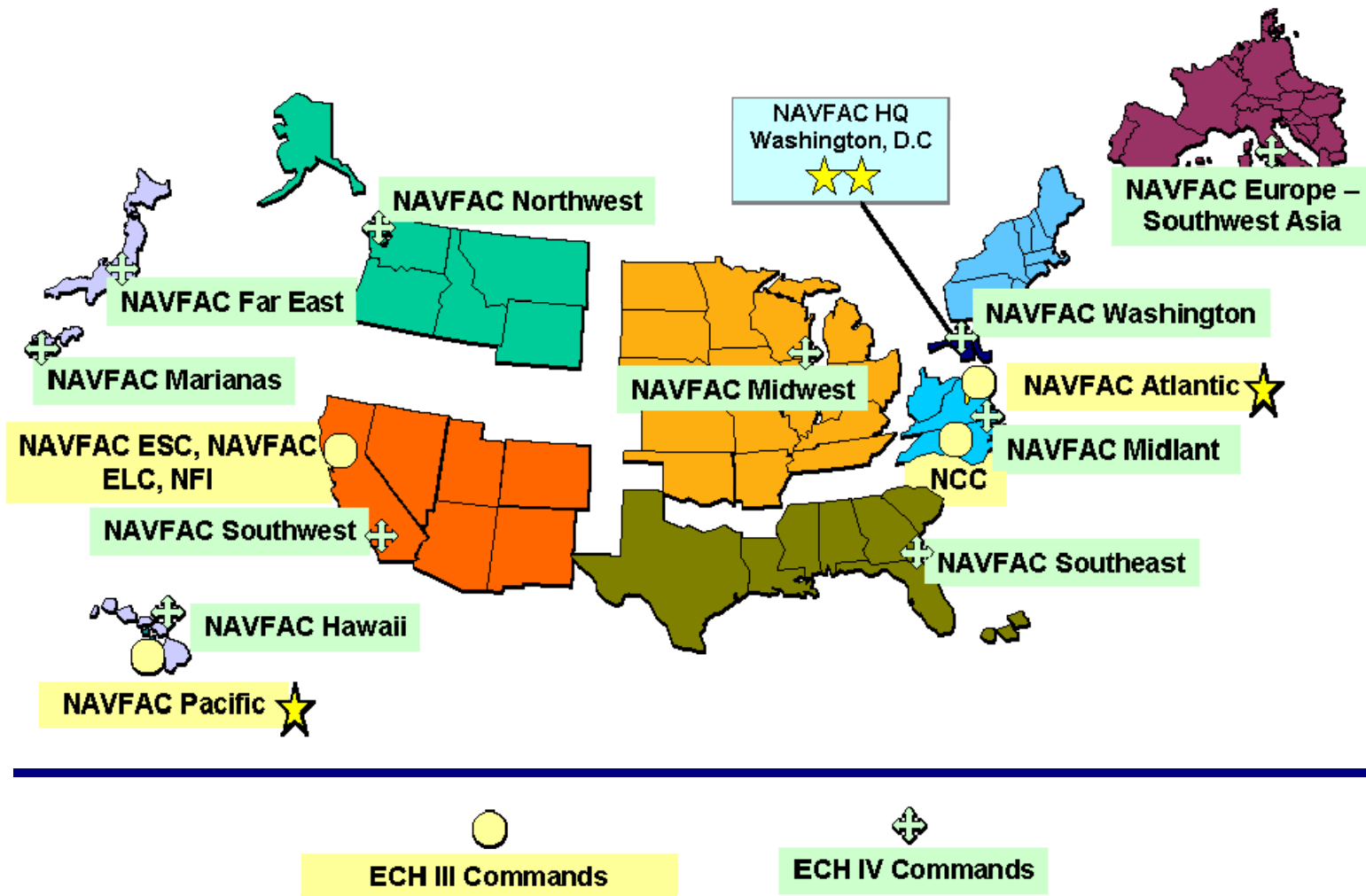
- **During Construction (as we near completion).....**
 - **Maintain specified quality standards for final activities (ie. grading/seeding, landscaping, painting, carpeting, etc.) ~ sometimes there is a tendency to “rush” these types of work items without the same level of care/oversight**
 - **Conduct a thorough punchout inspection and correct noted items prior to requesting a prefinal and final inspection. An “ideal” final inspection should yield a very limited punchlist**
 - **Keep the key staff on the job through completion. They know what truly remains to be done and have the power to get it done.**
 - **Get the punchlist done, move out and get paid!!!**

What's New?

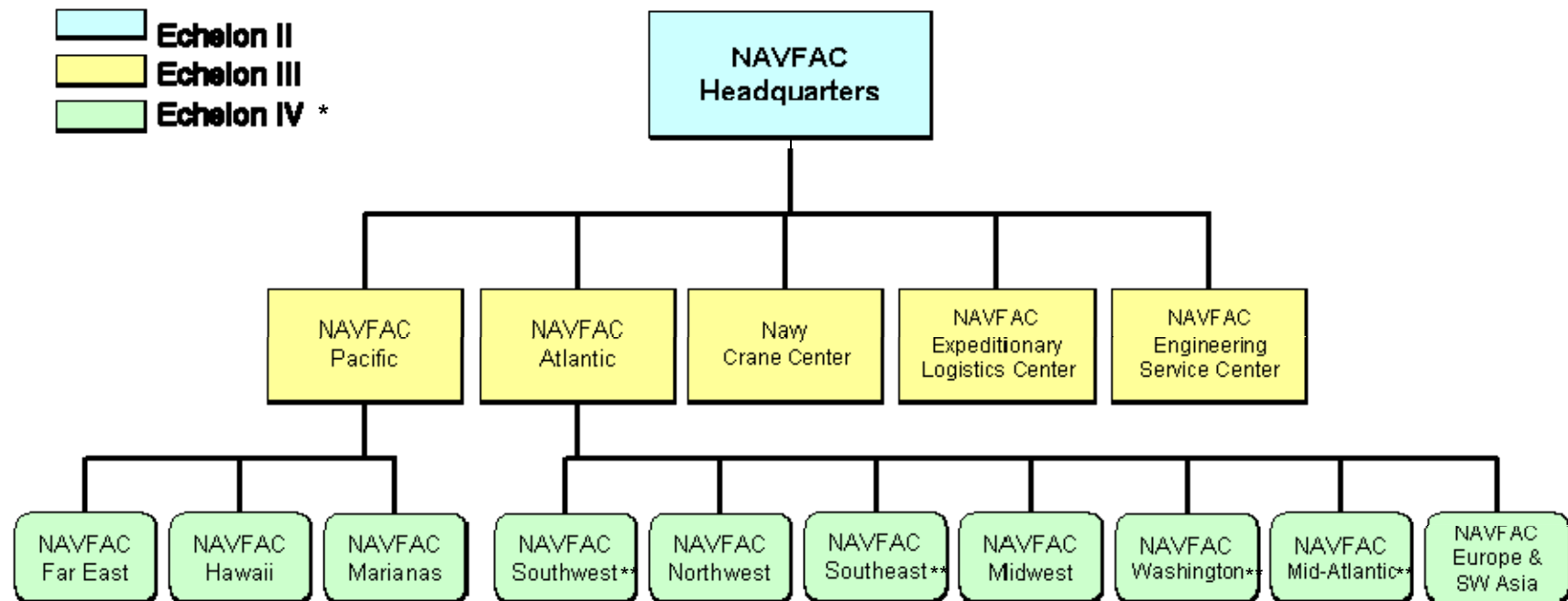


- **Primavera P6**
- **Formal and Informal Partnering**
- **CQM for Contractors Training certification requirements**
- **Early Contractor Involvement (ECI)**
- **Safety as a primary factor in selection criteria**
- **Safety standards for subcontractors written into specifications**

NAVFAC AoR



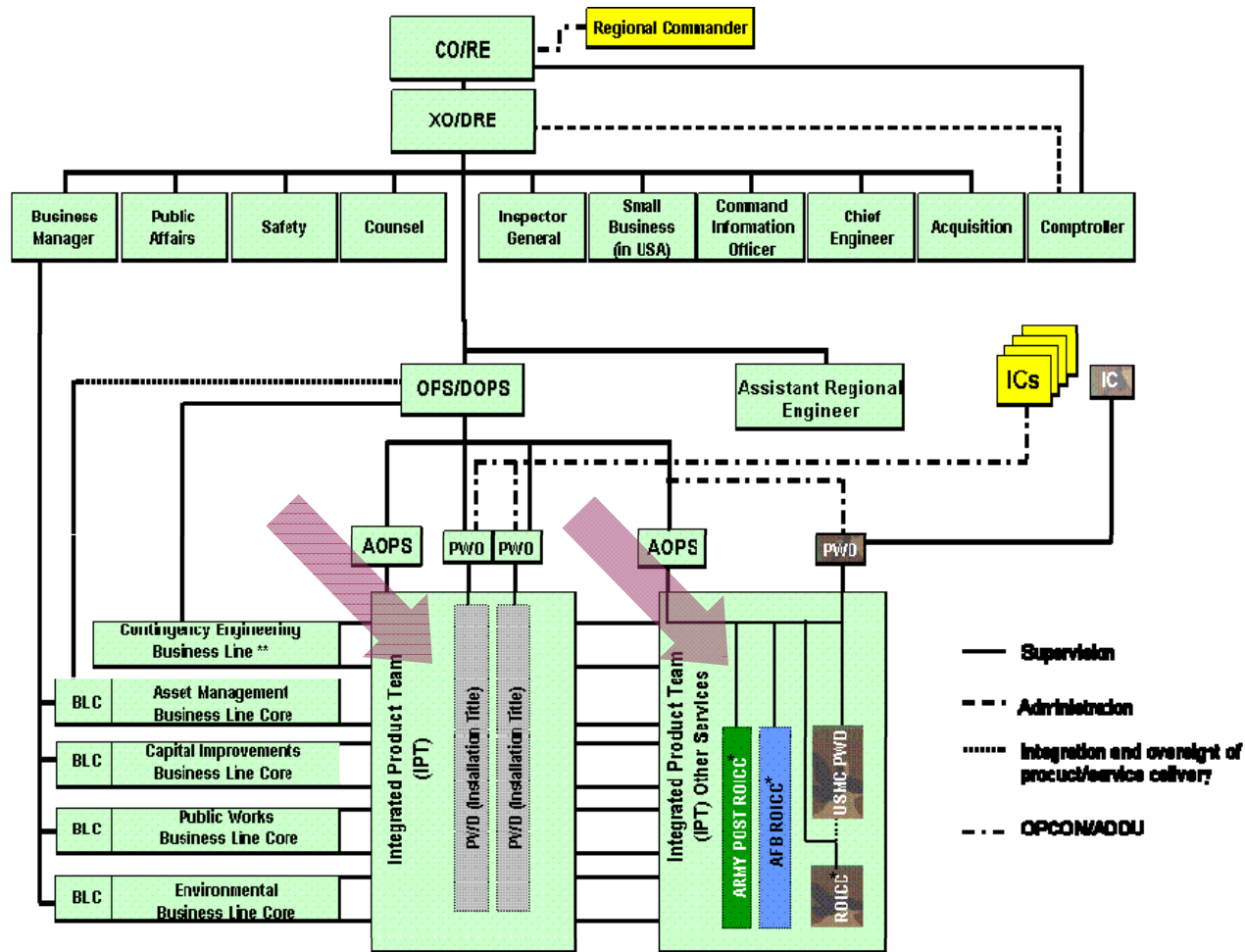
NAVFAC Organizational Structure



•Echelon IV = Field Engineering Commands (FECs)

** These FECs also have OICCs which are considered Echelon V Commands (SW = MCI West, SE = Katrina, WA = Bethesda, ML = MCI East)

FEC Organizational Structure



CECLCDMLT at FE and EURSWA

* ROICC = Resident Officer in Charge of Construction. These are NAVFAC construction field offices that are located at Marine Corps Installations and some Army/Air Force Installations.

Navy PWD Organizational Structure

